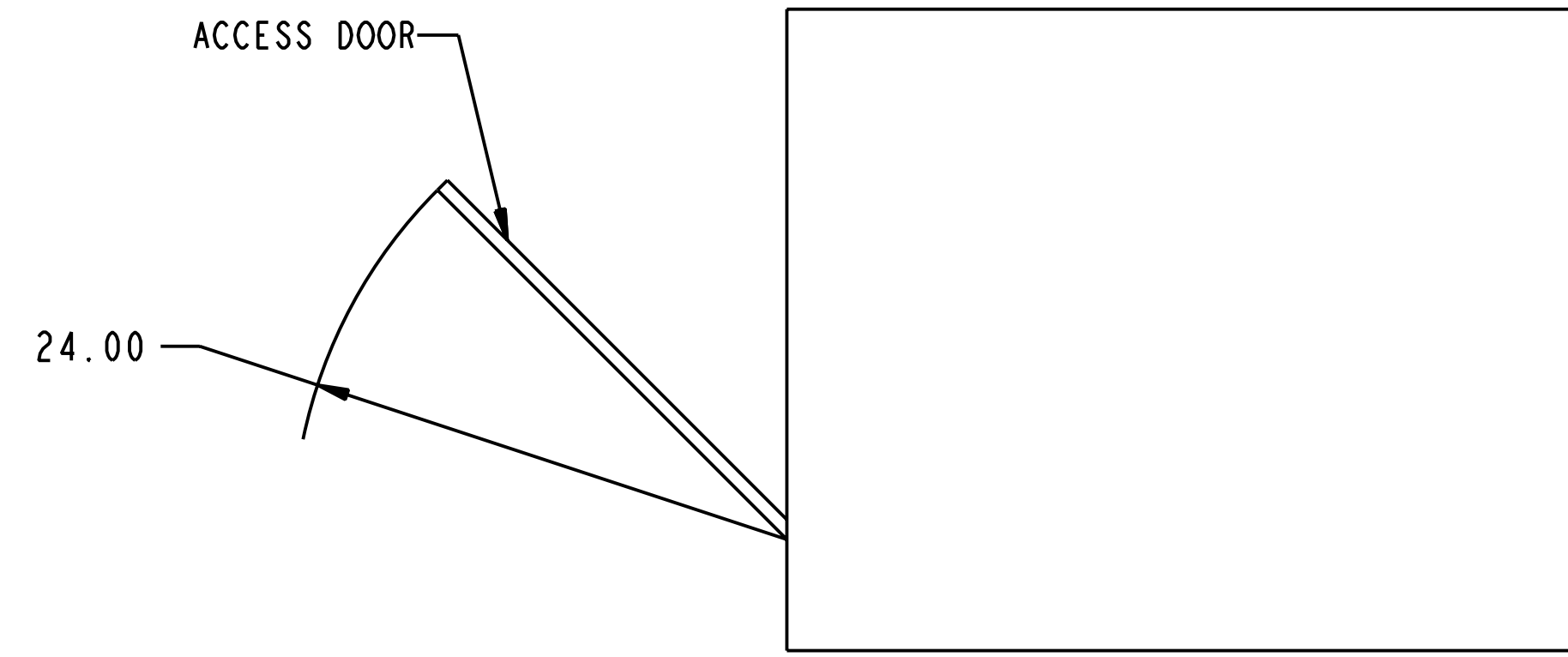
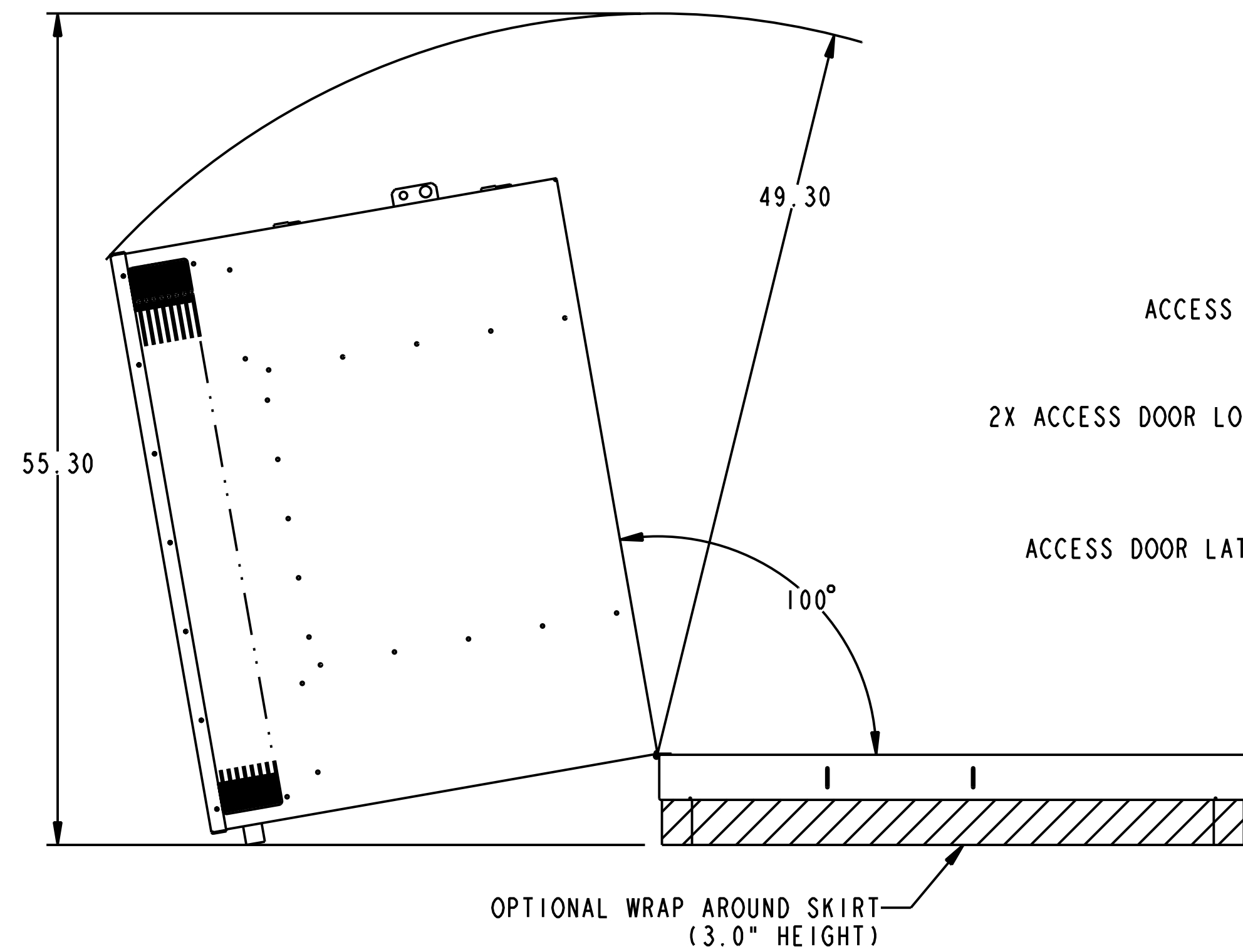


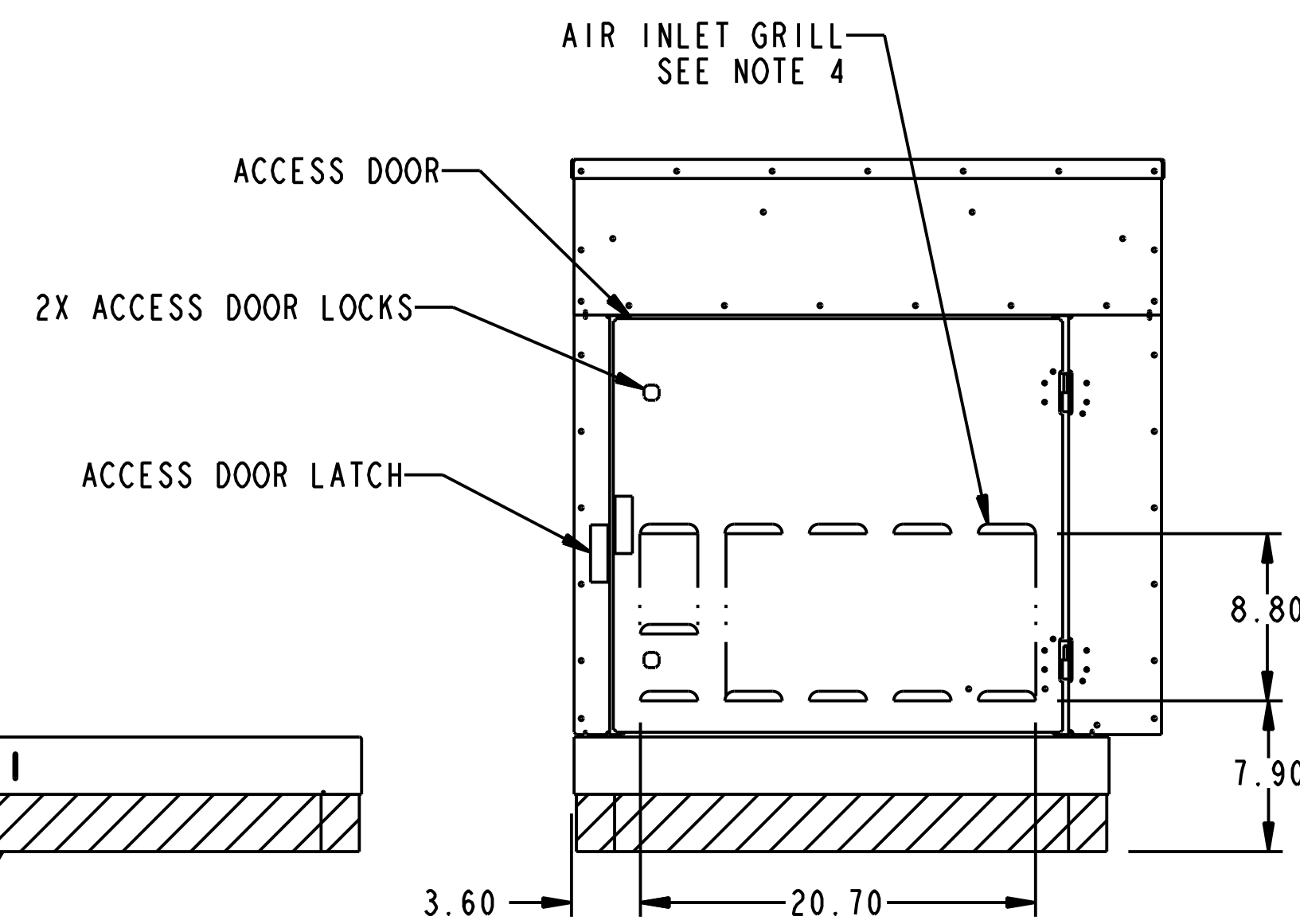
REVISIONS				
REV	DATE	CHANGE	BY	ECN#
0	6/5/05	RELEASED FOR PRODUCTION	BNR	R05289



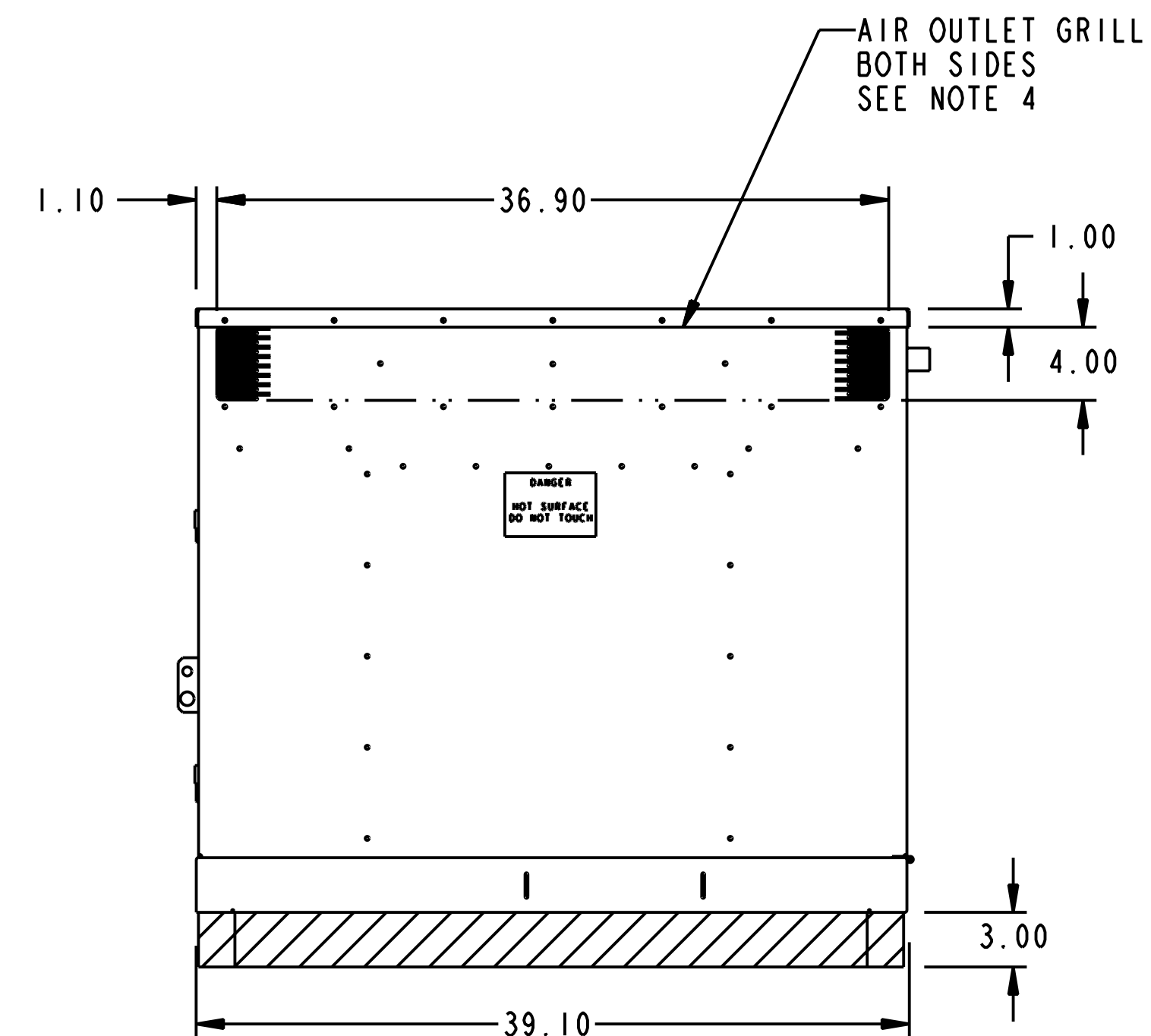
TOP VIEW



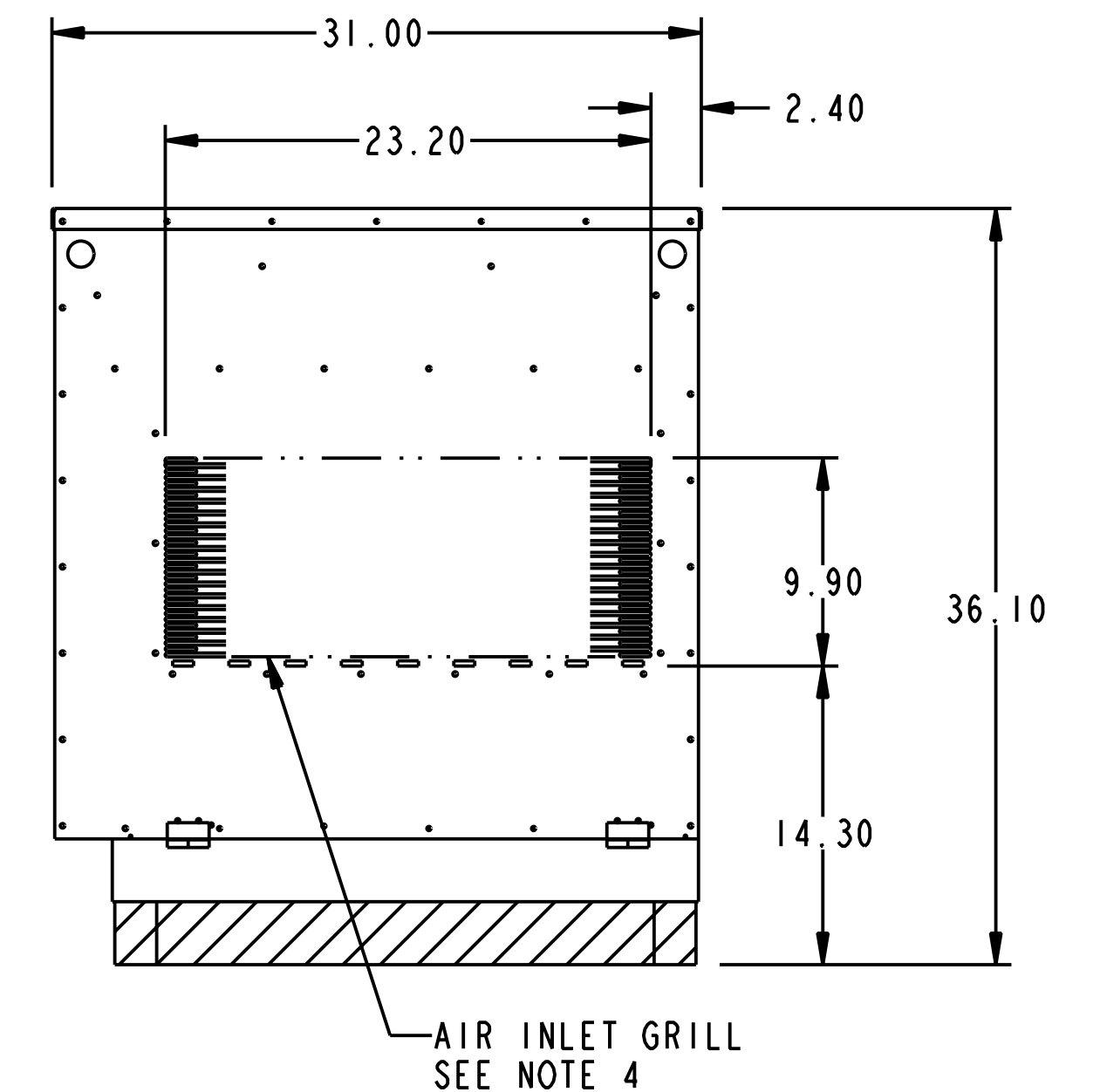
LEFT SIDE



FRONT VIEW



RIGHT SIDE



REAR VIEW

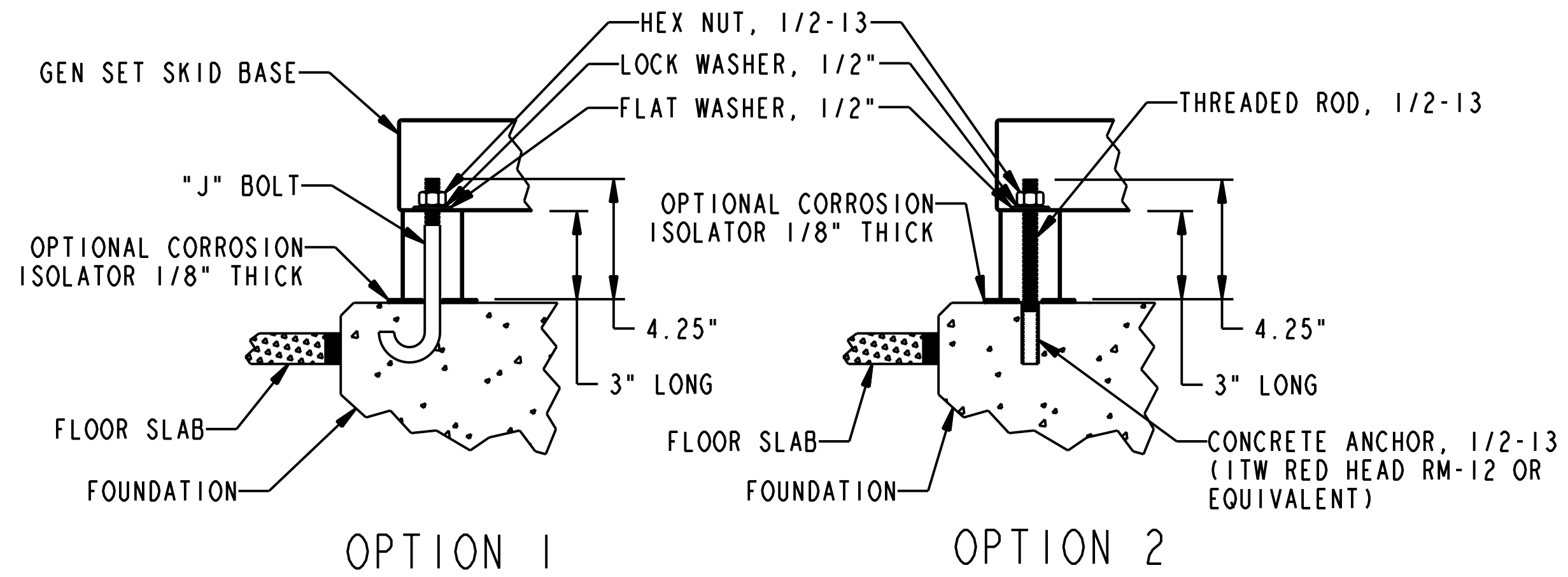
DIMENSIONAL TOLERANCES
.X = ±.1
.XX = ±.05
.XXX = ±.005
ANGLES = ±1°

DO NOT SCALE THIS DRAWING

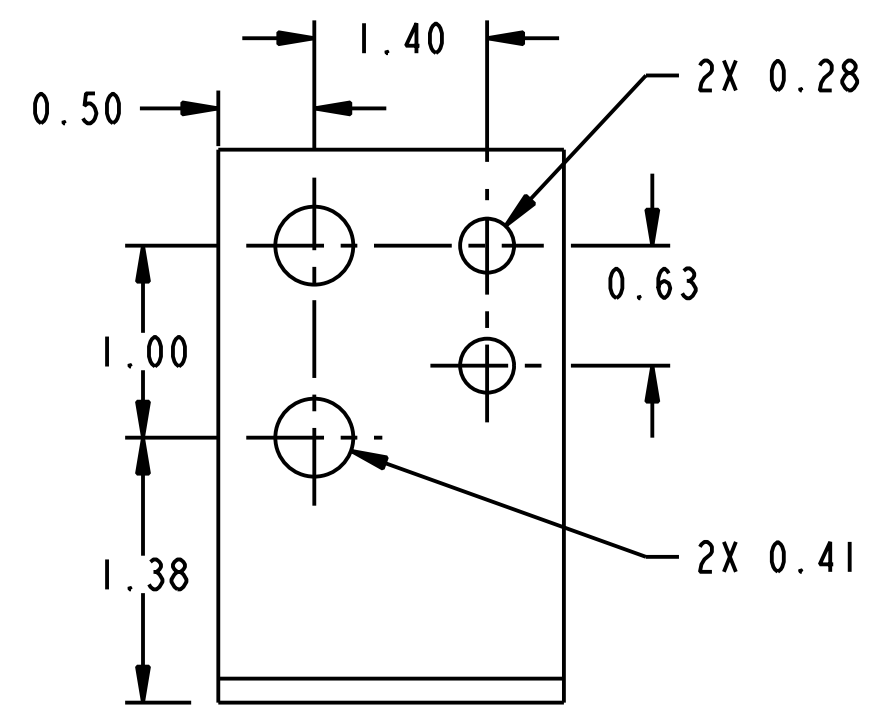
THIS DRAWING/DATA FILE (AND THE INFORMATION SHOWN THEREON) IS CONFIDENTIAL AND PROPRIETARY AND SHALL NOT BE USED, DISCLOSED TO OTHERS, OR REPRODUCED BY ANY MEANS IN HARD COPY FORM OR IN MACHINE READABLE FILES, WITHOUT WRITTEN CONSENT OF CUMMINS POWER PRODUCTS

REF. DRAWING NO. 500-3201	MATERIAL
MODELED BY BNR	
REF. DRAWING STANDARDS: ANSI Y14.5M, ISO R1101	ALL DIMENSIONS: INCH [MILLIMETER]
CUMMINS POWER PRODUCTS NEW HUDSON, MICHIGAN	
DRAWN BY BNR	DATE 6/5/05
CHK'D	DATE
APP'D	DATE
INSTALLATION DRAWING 5.5 KW GENSET MODELS	
SHEET 1 OF 5	DRAWING NO.
SCALE: N/A	60000206

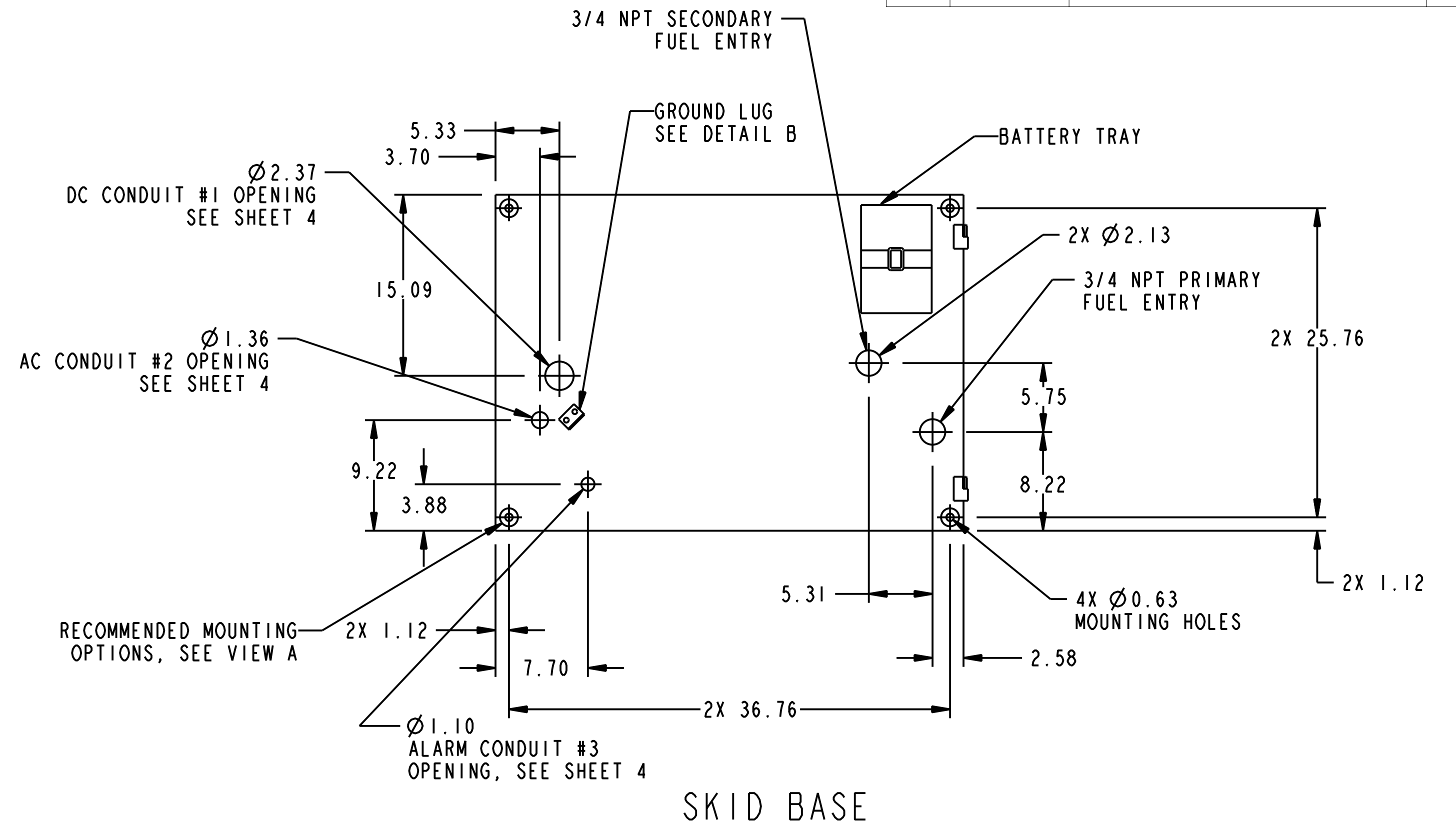
REVISIONS				
REV	DATE	CHANGE	BY	ECN#
0	6/5/05	RELEASED FOR PRODUCTION	BNR	R05289



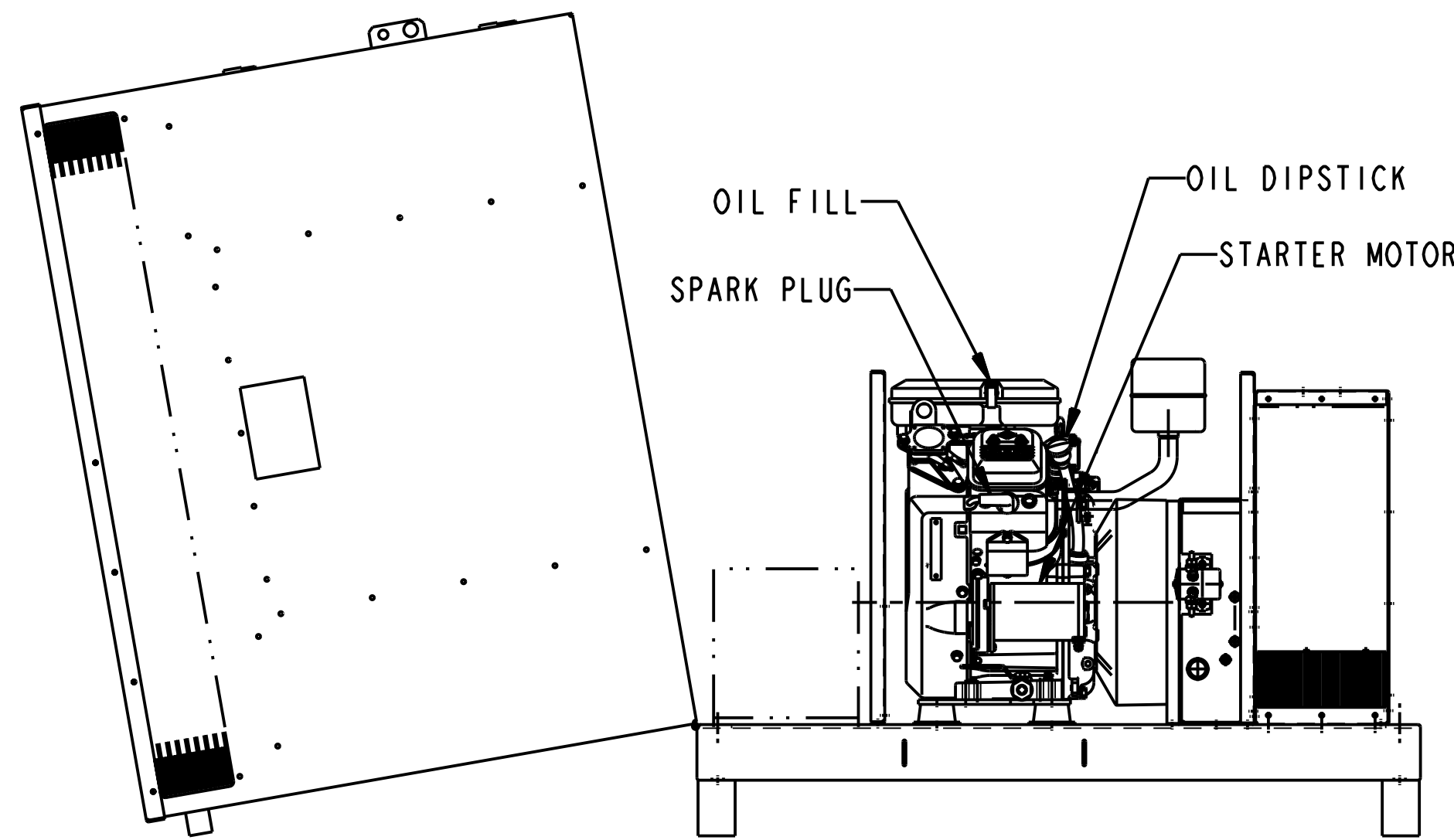
VIEW A
SCALE: 1/4



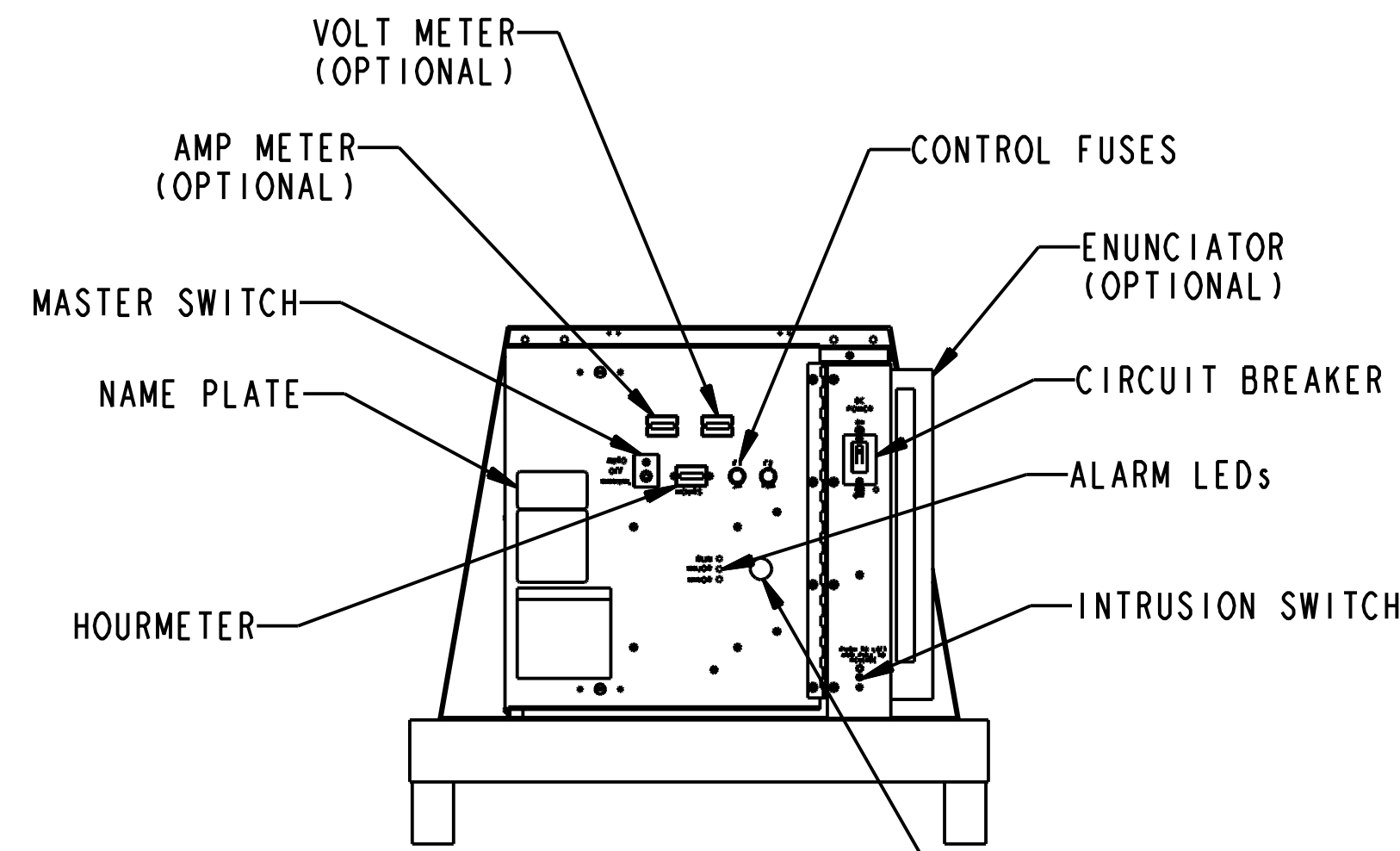
DETAIL B
GROUND LUG
SCALE: 1/1



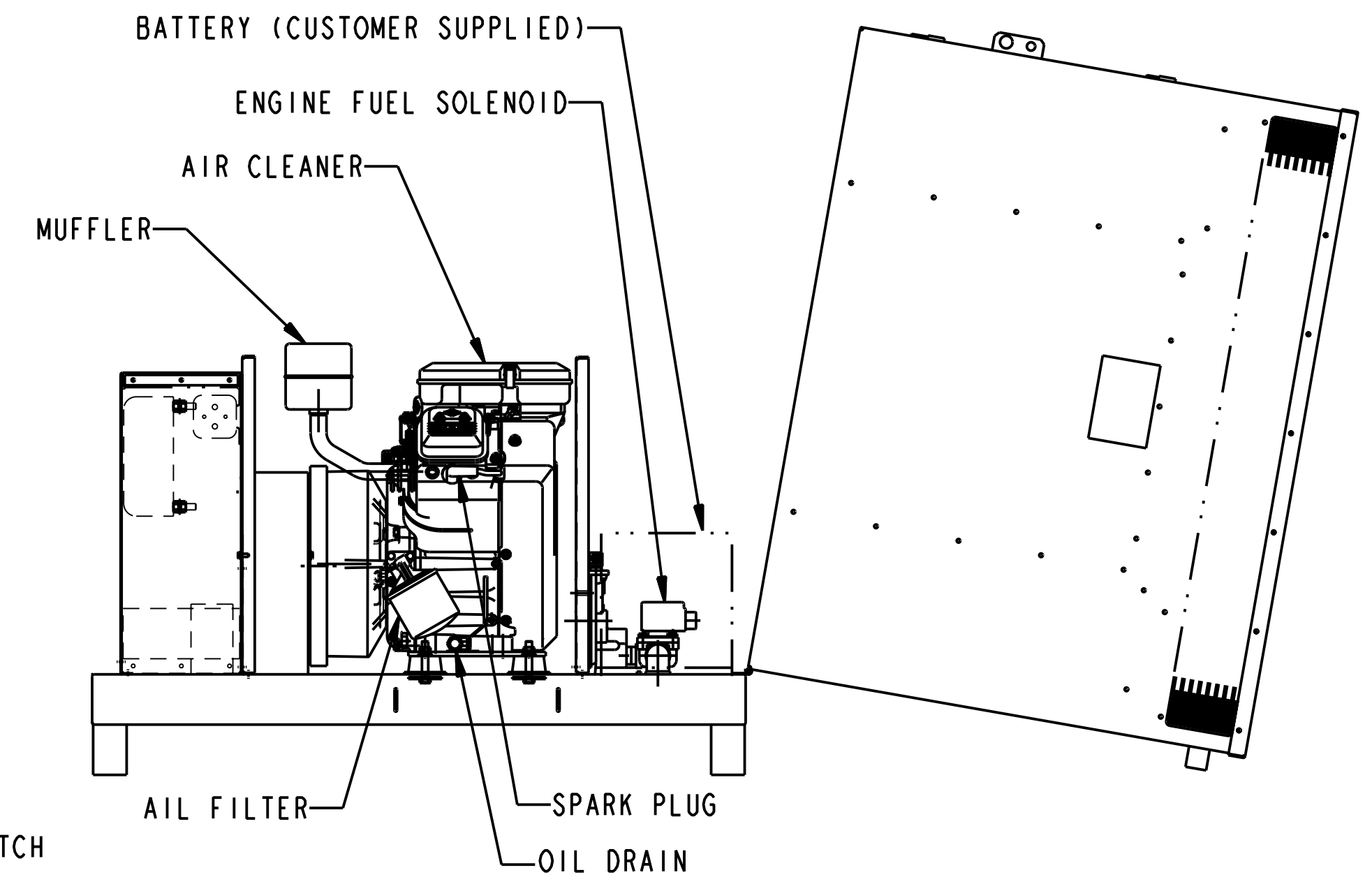
SKID BASE



LEFT SIDE



FRONT



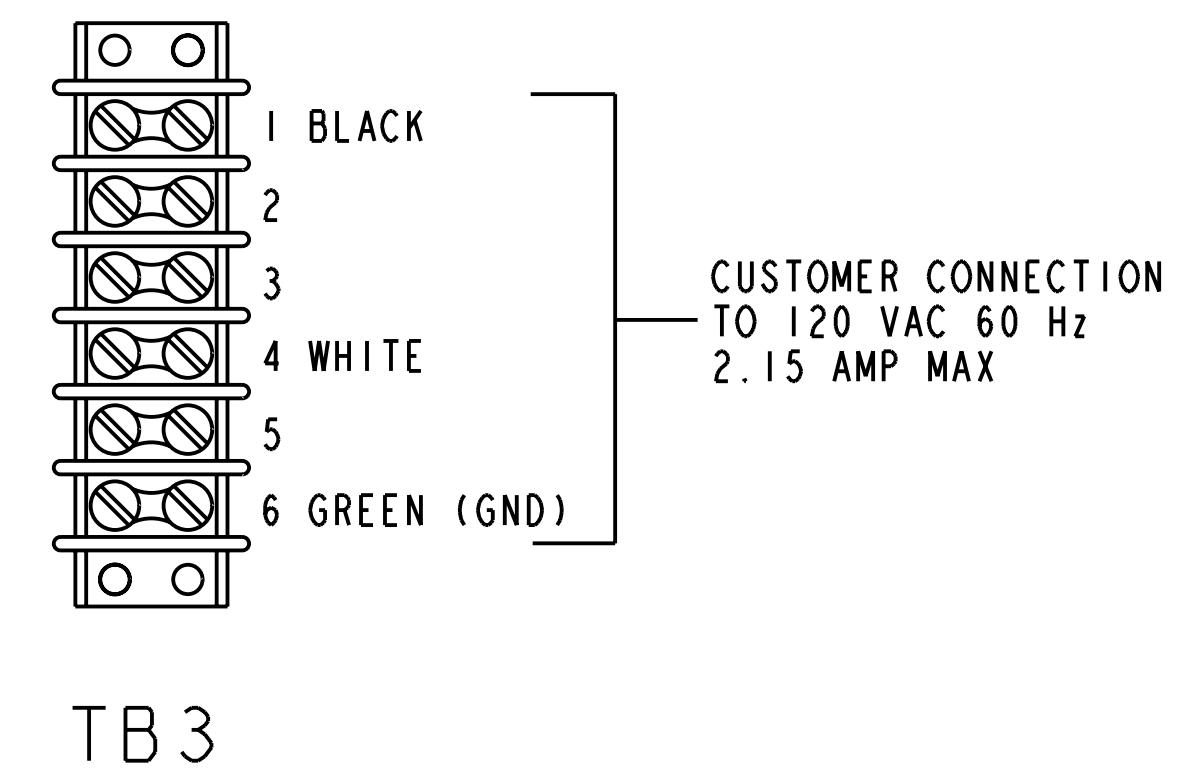
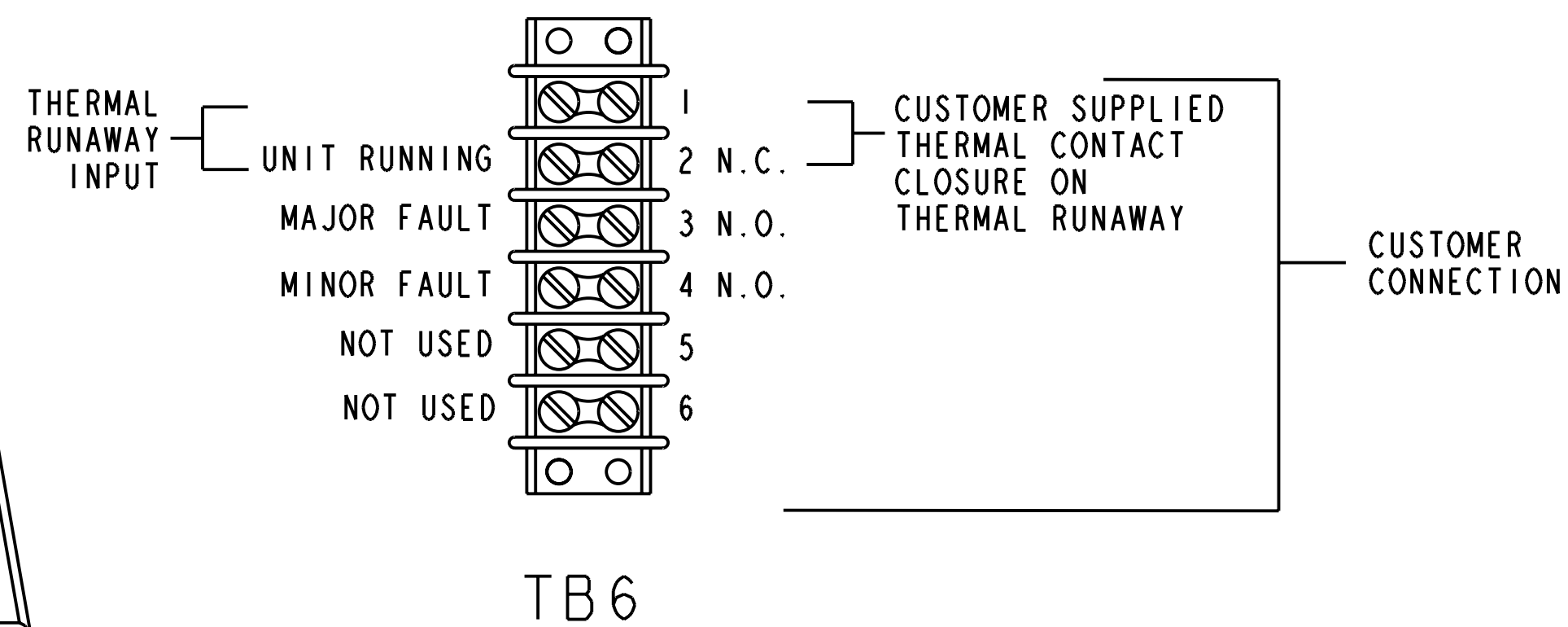
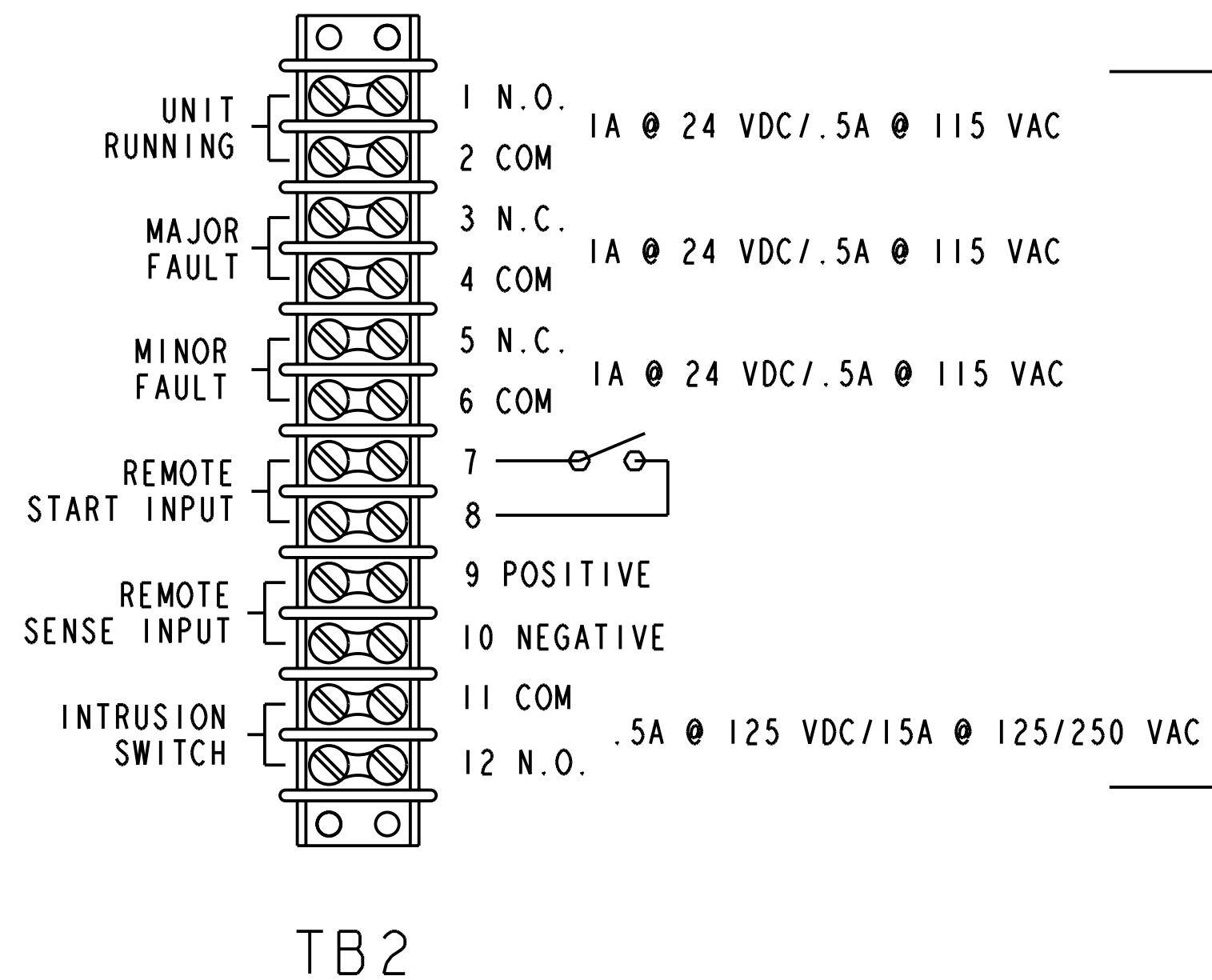
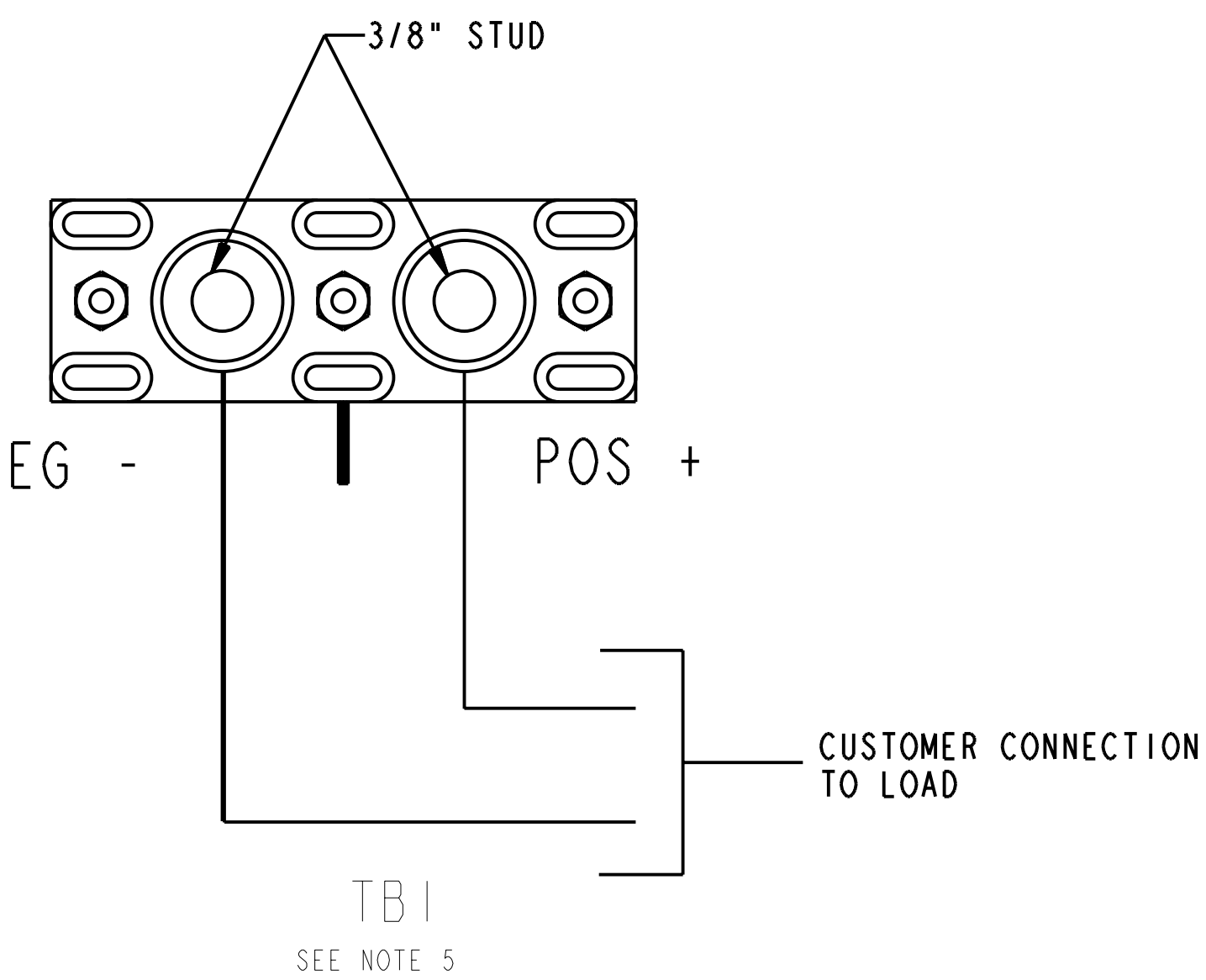
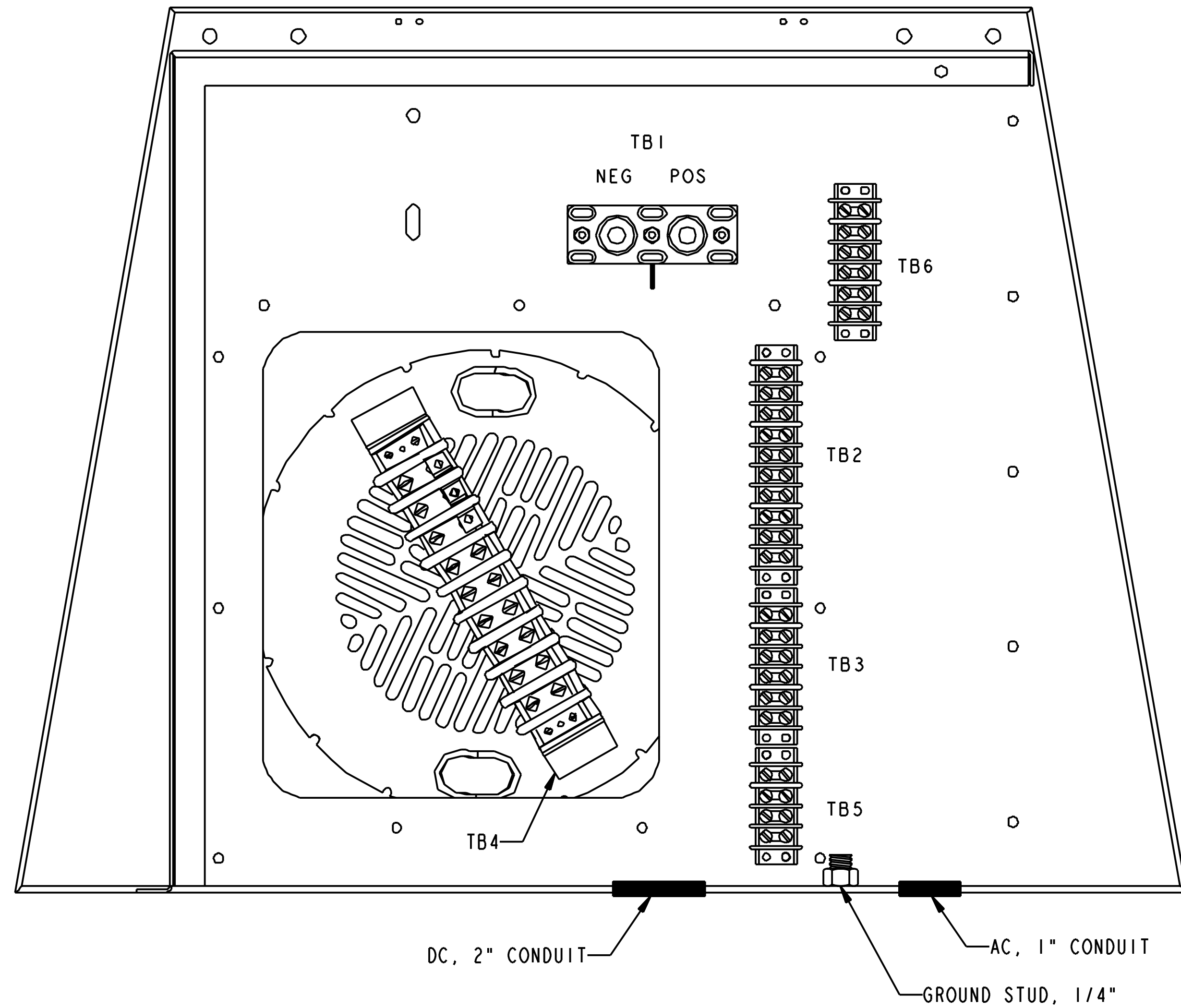
RIGHT SIDE

DIMENSIONAL TOLERANCES	
.X	±.1
.XX	±.05
.XXX	±.005
ANGLES	±1°

DO NOT SCALE THIS DRAWING
THIS DRAWING/DATA FILE (AND THE INFORMATION SHOWN THEREON) IS CONFIDENTIAL AND PROPRIETARY AND SHALL NOT BE USED, DISCLOSED TO OTHERS, OR REPRODUCED BY ANY MEANS IN HARD COPY FORM OR IN MACHINE READABLE FILES, WITHOUT WRITTEN CONSENT OF CUMMINS POWER PRODUCTS

REF. DRAWING NO. 500-3201	MATERIAL
MODELED BY BNR	
REF. DRAWING STANDARDS: ANSI Y14.5M, ISO R1101	ALL DIMENSIONS: INCH [MILLIMETER]
CUMMINS POWER PRODUCTS	
NEW HUDSON, MICHIGAN	
DRAWN BY BNR	DATE 6/5/05
CHK'D	DATE
APP'D	DATE
INSTALLATION DRAWING 5.5 KW GENSET MODELS	
SHEET 2 OF 5	DRAWING NO. 60000206
SCALE: N/A	

VIEW LOOKING AT THE BACK WALL
OF THE CONTROL PANEL COMPARTMENT



REVISIONS				
REV	DATE	CHANGE	BY	ECN#
0	6/5/05	RELEASED FOR PRODUCTION	BNR	R05289

- NOTES:
- THE GENERATOR SET DC POWER CONNECTION IS LOCATED AT TERMINAL BOARD TB1.
 - DC LOAD CONDUCTORS SHOULD BE TERMINATED WITH 3/8 INCH CRIMP TYPE EYELETS
 - THE USE OF ALUMINUM SINGLE BARREL LUGS IS NOT RECOMMENDED DUE TO INCREASED MAINTAINANCE.
 - TO INSTALL THE DC POWER CONNECTORS, REMOVE THE STUD HARDWARE PROVIDED AND PLACE THE 3/8 INCH EYELET OVER THE STUD. REPLACE THE STUD HARDWARE AND TORQUE NUT TO 20 FT-LBS.
 - OUTPUT CURRENT IS 250 AMPS, 24 VDC OR 125 AMPS, 48 VDC. RECOMMENDED MIN CABLE SIZE IS GIVEN BELOW FOR VARIOUS CABLE LENGTHS (TOTAL LOOP LENGTH OF POSITIVE AND NEGATIVE CABLE).

LOOP LENGTH	CABLE SIZE
24 VDC, 25 FT	250 MCM
24 VDC, 50 FT	250 MCM
24 VDC, 100 FT	500 MCM
48 VDC, 25 FT	1/0 AWG
48 VDC, 50 FT	2/0 AWG
48 VDC, 100 FT	4/0 AWG

<p>DO NOT SCALE THIS DRAWING</p> <p>THIS DRAWING/DATA FILE (AND THE INFORMATION SHOWN THEREON) IS CONFIDENTIAL AND PROPRIETARY AND SHALL NOT BE USED, DISCLOSED TO OTHERS, OR REPRODUCED BY ANY MEANS IN HARD COPY FORM OR IN MACHINE READABLE FILES, WITHOUT WRITTEN CONSENT OF CUMMINS POWER PRODUCTS</p>	REF. DRAWING NO. 500-3201	MATERIAL
	MODELED BY BNR	
	REF. DRAWING STANDARDS: ANSI Y14.5M, ISO R1101 ALL DIMENSIONS: INCH [MILLIMETER]	
	<p>CUMMINS POWER PRODUCTS NEW HUDSON, MICHIGAN</p>	
<p>DIMENSIONAL TOLERANCES</p> <p>.X = ±.1</p> <p>.XX = ±.05</p> <p>.XXX = ±.005</p> <p>ANGLES = ±1°</p>	<p>DRAWN BY BNR DATE 6/5/05</p> <p>CHK'D DATE</p> <p>APP'D DATE</p>	<p>PART NAME/APPLICATION</p> <p>INSTALLATION DRAWING</p> <p>5.5 KW GENSET MODELS</p> <p>SHEET 3 OF 5</p> <p>DRAWING NO.</p> <p>SCALE: N/A 60000206</p>

REVISIONS				
REV	DATE	CHANGE	BY	ECN#
0	6/5/05	RELEASED FOR PRODUCTION	BNR	R05289

LEAD	DESCRIPTION	FROM (GENERATOR)	TERMINAL	TO (CUSTOMER)
ALARM CONDUIT #3				
9	OVERCRANK	J3-1 (NC)	STRIP 5/16"	OVERCRANK
10	OVERCRANK	J3-2 (C)	STRIP 5/16"	OVERCRANK
11	OVERCRANK	J3-3 (NO)	STRIP 5/16"	OVERCRANK
12	OVERVOLTAGE	J3-4 (NC)	STRIP 5/16"	OVERVOLTAGE
13	OVERVOLTAGE	J3-5 (C)	STRIP 5/16"	OVERVOLTAGE
14	OVERVOLTAGE	J3-6 (NO)	STRIP 5/16"	OVERVOLTAGE
15	OVERSPEED	J3-7 (NC)	STRIP 5/16"	OVERSPEED
16	OVERSPEED	J3-8 (C)	STRIP 5/16"	OVERSPEED
17	OVERSPEED	J3-9 (NO)	STRIP 5/16"	OVERSPEED
18	CIRCUIT BREAKER TRIP	J3-10 (NC)	STRIP 5/16"	CIRCUIT BREAKER TRIP
19	CIRCUIT BREAKER TRIP	J3-11 (C)	STRIP 5/16"	CIRCUIT BREAKER TRIP
20	CIRCUIT BREAKER TRIP	J3-12 (NO)	STRIP 5/16"	CIRCUIT BREAKER TRIP
21	OVER TEMPERATURE	J3-13 (NC)	STRIP 5/16"	OVER TEMPERATURE
22	OVER TEMPERATURE	J3-14 (C)	STRIP 5/16"	OVER TEMPERATURE
23	OVER TEMPERATURE	J3-15 (NO)	STRIP 5/16"	OVER TEMPERATURE
24	ENGINE SHUTDOWN	J3-16 (NC)	STRIP 5/16"	ENGINE SHUTDOWN
25	ENGINE SHUTDOWN	J3-17 (C)	STRIP 5/16"	ENGINE SHUTDOWN
26	ENGINE SHUTDOWN	J3-18 (NO)	STRIP 5/16"	ENGINE SHUTDOWN
27	LOW VOLTAGE SHUTDOWN	J3-19 (NC)	STRIP 5/16"	LOW VOLTAGE SHUTDOWN
28	LOW VOLTAGE SHUTDOWN	J3-20 (C)	STRIP 5/16"	LOW VOLTAGE SHUTDOWN
29	LOW VOLTAGE SHUTDOWN	J3-21 (NO)	STRIP 5/16"	LOW VOLTAGE SHUTDOWN
30	GAS HAZARD	J3-22 (NC)	STRIP 5/16"	GAS HAZARD
31	GAS HAZARD	J3-23 (C)	STRIP 5/16"	GAS HAZARD
32	GAS HAZARD	J3-24 (NO)	STRIP 5/16"	GAS HAZARD
33	PAD SHEAR	J3-25 (NC)	STRIP 5/16"	PAD SHEAR
34	PAD SHEAR	J3-26 (C)	STRIP 5/16"	PAD SHEAR
35	PAD SHEAR	J3-27 (NO)	STRIP 5/16"	PAD SHEAR
36	COMMERCIAL POWER FAILURE	J3-28 (NC)	STRIP 5/16"	COMMERCIAL POWER FAILURE
37	COMMERCIAL POWER FAILURE	J3-29 (C)	STRIP 5/16"	COMMERCIAL POWER FAILURE
38	COMMERCIAL POWER FAILURE	J3-30 (NO)	STRIP 5/16"	COMMERCIAL POWER FAILURE
39	SYSTEM CHARGE	J3-31 (NC)	STRIP 5/16"	SYSTEM CHARGE
40	SYSTEM CHARGE	J3-32 (C)	STRIP 5/16"	SYSTEM CHARGE
41	SYSTEM CHARGE	J3-33 (NO)	STRIP 5/16"	SYSTEM CHARGE
42	START LOW VOLTAGE	J3-34 (NC)	STRIP 5/16"	START LOW VOLTAGE
43	START LOW VOLTAGE	J3-35 (C)	STRIP 5/16"	START LOW VOLTAGE
44	START LOW VOLTAGE	J3-36 (NO)	STRIP 5/16"	START LOW VOLTAGE
45	LOW FUEL PRESSURE	J3-37 (NC)	STRIP 5/16"	LOW FUEL PRESSURE
46	LOW FUEL PRESSURE	J3-38 (C)	STRIP 5/16"	LOW FUEL PRESSURE
47	LOW FUEL PRESSURE	J3-39 (NO)	STRIP 5/16"	LOW FUEL PRESSURE
48	SWITCH NOT IN AUTO	J3-40 (NC)	STRIP 5/16"	SWITCH NOT IN AUTO
49	SWITCH NOT IN AUTO	J3-41 (C)	STRIP 5/16"	SWITCH NOT IN AUTO
50	SWITCH NOT IN AUTO	J3-42 (NO)	STRIP 5/16"	SWITCH NOT IN AUTO
51	LOW START BATTERY	J3-43 (NC)	STRIP 5/16"	LOW START BATTERY
52	LOW START BATTERY	J3-44 (C)	STRIP 5/16"	LOW START BATTERY
53	LOW START BATTERY	J3-45 (NO)	STRIP 5/16"	LOW START BATTERY
54	SPARE #1	J3-46 (NC)	STRIP 5/16"	SPARE #1
55	SPARE #1	J3-47 (C)	STRIP 5/16"	SPARE #1
56	SPARE #1	J3-48 (NO)	STRIP 5/16"	SPARE #1
57	SPARE #2	J3-49 (NC)	STRIP 5/16"	SPARE #2
58	SPARE #2	J3-50 (C)	STRIP 5/16"	SPARE #2
59	SPARE #2	J3-51 (NO)	STRIP 5/16"	SPARE #2

LEAD	DESCRIPTION	FROM (GENERATOR)	TERMINAL	TO (CUSTOMER)
DC OUTPUT CONDUIT #1				
1	POSITIVE DC OUTPUT	TB1-2 (POS)	3/8" EYELET	DC BUSS (POS)
2	NEGATIVE DC OUTPUT	TB1-1 (NEG)	3/8" EYELET	DC BUSS (NEG)
3	REMOTE VOLTAGE SENSE	TB2-9 (POS)	#6 EYELET	DC BUSS (POS)
4	REMOTE VOLTAGE SENSE	TB2-10 (NEG)	#6 EYELET	DC BUSS (NEG)
5	EQUIPMENT GROUND	2-HOLE GROUND BAR	2-HOLE CRIMP	COG
AC POWER CONDUIT #2				
6	AC LINE (BLACK WIRE)	TB3-1	#6 EYELET	CIRCUIT BREAKER
7	AC LINE (WHITE WIRE)	TB3-4	#6 EYELET	NUETRAL BAR
8	AC GROUND (GREEN WIRE)	TB3-6	#6 EYELET	GROUND BAR

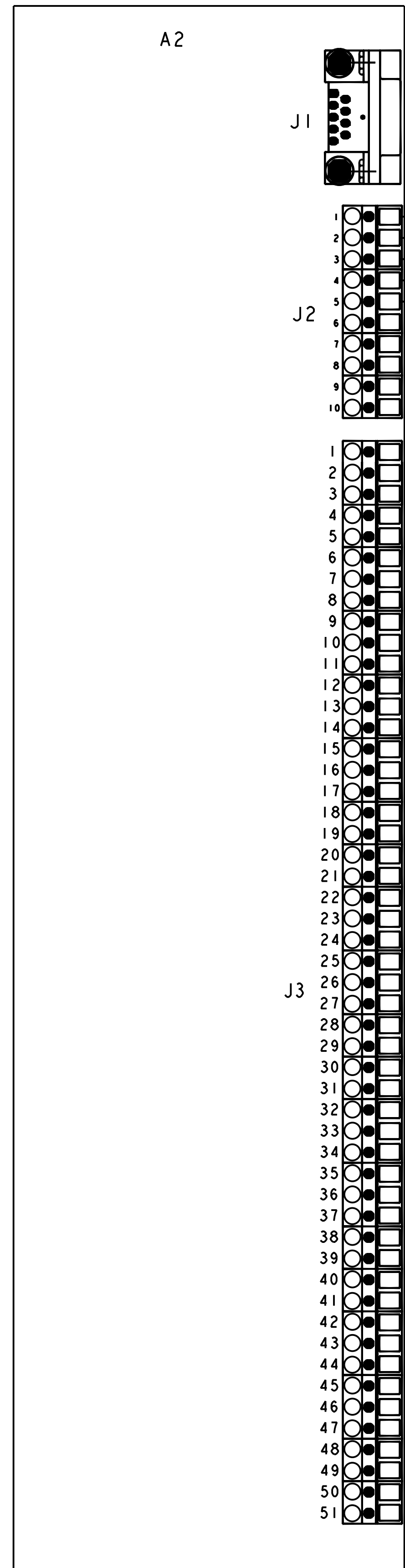
DIMENSIONAL TOLERANCES	
.X = ±.1	
.XX = ±.05	
.XXX = ±.005	
ANGLES = ±1°	

DO NOT SCALE THIS DRAWING

THIS DRAWING/DATA FILE (AND THE INFORMATION SHOWN THEREON) IS CONFIDENTIAL AND PROPRIETARY AND SHALL NOT BE USED, DISCLOSED TO OTHERS, OR REPRODUCED BY ANY MEANS IN HARD COPY FORM OR IN MACHINE READABLE FILES, WITHOUT WRITTEN CONSENT OF CUMMINS POWER PRODUCTS

REF. DRAWING NO. 500-3201	MATERIAL
MODELED BY BNR	
REF. DRAWING STANDARDS: ANSI Y14.5M, ISO R1101 ALL DIMENSIONS: INCH [MILLIMETER]	
CUMMINS POWER PRODUCTS NEW HUDSON, MICHIGAN	
DRAWN BY BNR	DATE 6/5/05
CHK'D	DATE
APP'D	DATE
PART NAME/APPLICATION: INSTALLATION DRAWING 5.5 KW GENSET MODELS	
SHEET 4 OF 5	
DRAWING NO. 60000206	
SCALE: N/A	

REVISIONS				
REV	DATE	CHANGE	BY	ECN#
0	6/5/05	RELEASED FOR PRODUCTION	BNR	R05289



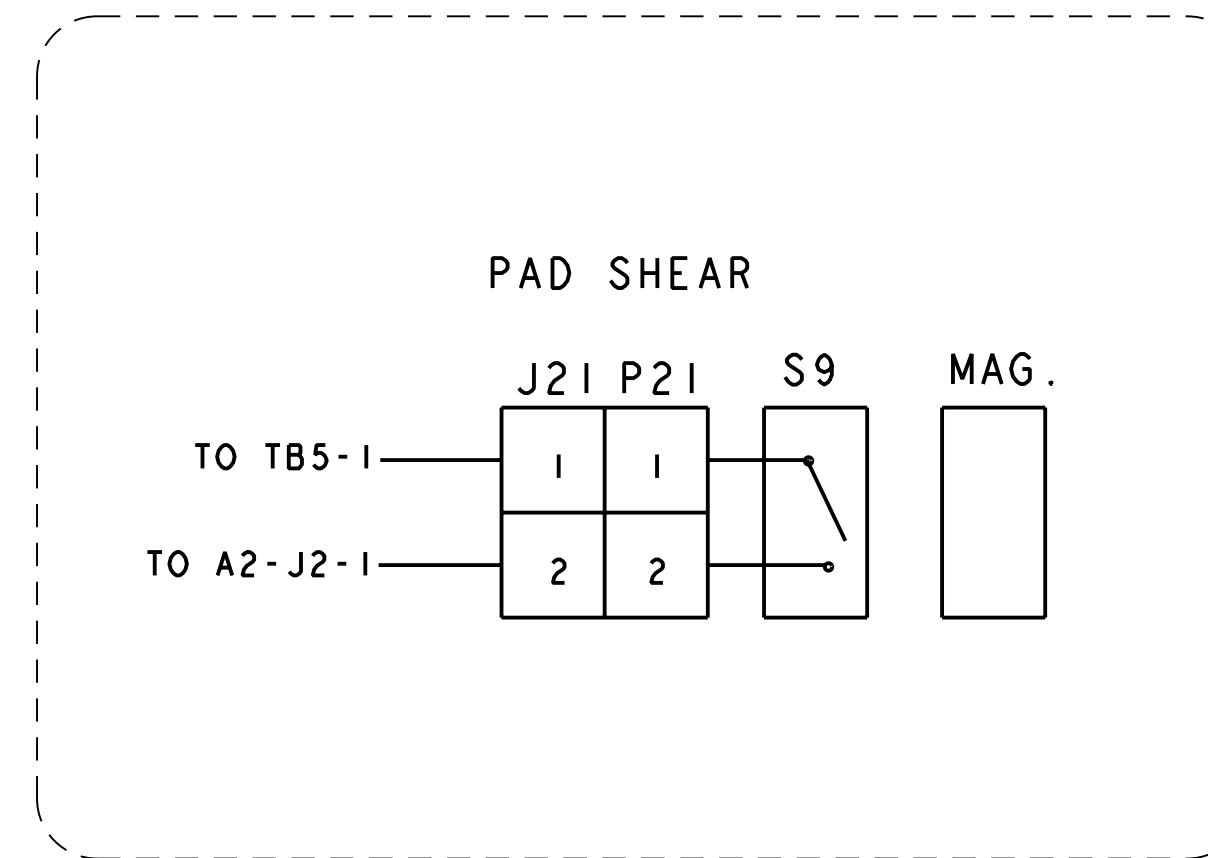
TO A1-J6

TO J21-2
TO J22-5
TO TB5-1
TO TB5-4
TO PANEL GRD

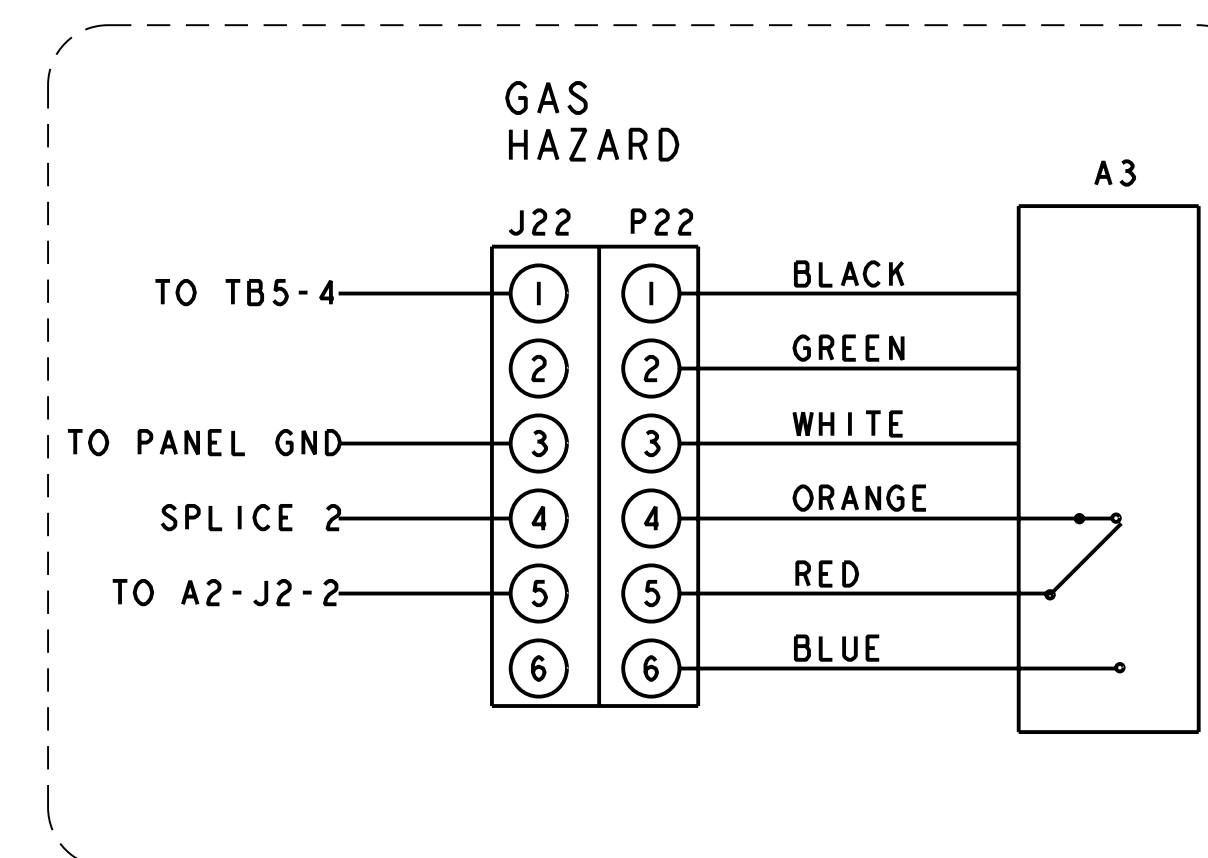
CUSTOMER INTERFACE

1	NC	
2	C	OVERCRANK
3	NO	
4	NC	OVERVOLT
5	C	
6	NO	
7	NC	
8	C	OVERSPEED
9	NO	
10	NC	CIRCUIT BREAKER TRIP
11	C	
12	NO	
13	NC	
14	C	OVERTEMP
15	NO	
16	NC	
17	C	ENGINE SHUTDOWN
18	NO	
19	NC	LOW VOLTAGE SHUTDOWN
20	C	
21	NO	
22	NC	
23	C	GAS HAZARD
24	NO	
25	NC	
26	C	PAD SHEAR
27	NO	
28	NC	COMM POWER FAIL
29	C	
30	NO	
31	NC	
32	C	SYSTEM CHARGE
33	NO	
34	NC	START LOW VOLTAGE
35	C	
36	NO	
37	NC	
38	C	LOW FUEL
39	NO	
40	NC	SWITCH NOT IN AUTO
41	C	
42	NO	
43	NC	LOW START BATT
44	C	
45	NO	
46	NC	
47	C	SPARE 1
48	NO	
49	NC	
50	C	SPARE 2
51	NO	

OPTIONAL



OPTIONAL



OPTIONAL

DIMENSIONAL TOLERANCES	
.X	±.1
.XX	±.05
.XXX	±.005
ANGLES	±1°

DO NOT SCALE THIS DRAWING

THIS DRAWING/DATA FILE (AND THE INFORMATION SHOWN THEREON) IS CONFIDENTIAL AND PROPRIETARY AND SHALL NOT BE USED, DISCLOSED TO OTHERS, OR REPRODUCED BY ANY MEANS IN HARD COPY FORM OR IN MACHINE READABLE FILES, WITHOUT WRITTEN CONSENT OF CUMMINS POWER PRODUCTS

REF. DRAWING NO. 500-3201	MATERIAL
MODELED BY BNR	
REF. DRAWING STANDARDS: ANSI Y14.5M, ISO R1101	ALL DIMENSIONS: INCH [MILLIMETER]
CUMMINS POWER PRODUCTS NEW HUDSON, MICHIGAN	
DRAWN BY BNR	DATE 6/5/05
CHK'D	DATE
APP'D	DATE
INSTALLATION DRAWING 5.5 KW GENSET MODELS	
SHEET 5 OF 5	DRAWING NO.
SCALE: N/A	60000206